

Table of contents(目錄)

Paper

1-1.Line&Load Regulation And Temperature Chafaile Character (輸入&負荷及溫度變動特性)-----	4
1-2.Ripple And Noise Character(紋波特性)-----	5~6
1-3.Over-Voltage Protection (過電壓保護特性)-----	7
1-4.Over-Current Protection (過電流保護特性)-----	8
1-5.Dynamic ripple Character(動態負載特性)-----	9
1-6.Efficiency Character(效率特性)-----	10
1-7.Input&Load Change Character(輸入&負荷變動特性)-----	11
1-8.Inrush Current (浪涌電流)-----	12
1-9.Turn On Delay(開機爬升延遲時間)-----	13
2-1.Hold Up Time Character (保持時間)-----	14
2-2.Low Vac Shut Off (輸入欠壓關斷特性)-----	15
2-3. Over Shoot(過沖特性)-----	16
2-4.Under Shoot(下沖特性)-----	17
2-5.Leak Current (漏電流特性)-----	18

Evaluation Method 評價方法

Circuit used for determination 特性電路圖

Circuit 1 特性回路1

Line&Load Regulation And Temperature Chafaile Character (輸入&負荷及溫度變動特性)

Over-Voltage Protection (過電壓保護特性)

Over-Current Protection (過電流保護特性)

Dynamic ripple Character(動態負載特性)

Efficiency Character(效率特性)

Input&Load Change Character(輸入&負荷變動特性)

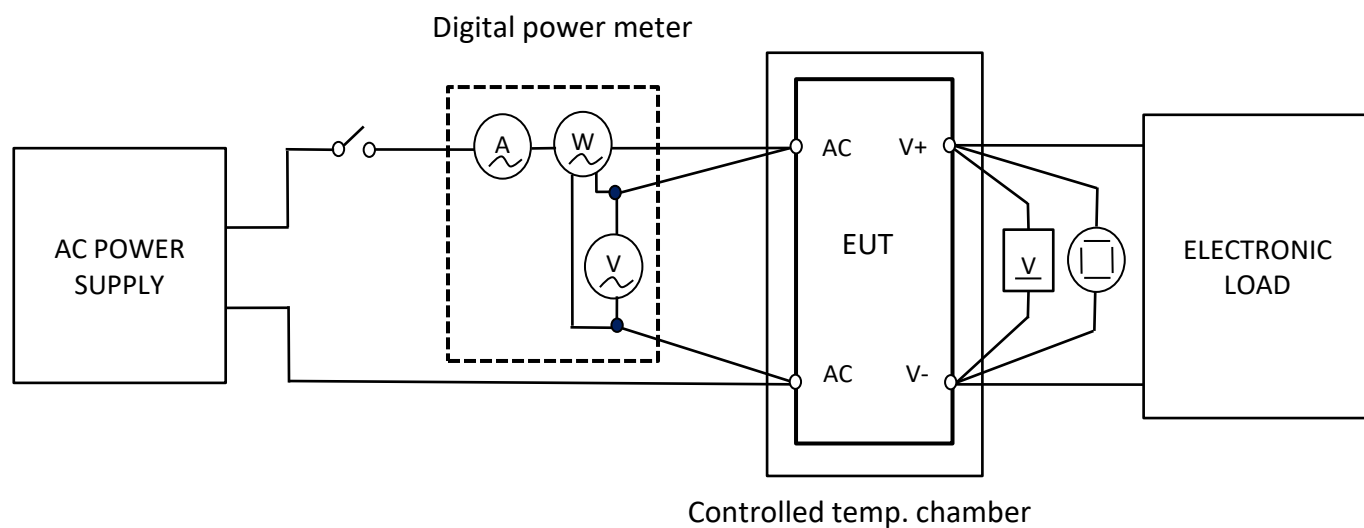
Turn On Delay(開機爬升延遲時間)

Hold Up Time Character (保持時間)

Low Vac Shut Off (輸入欠壓關斷特性)

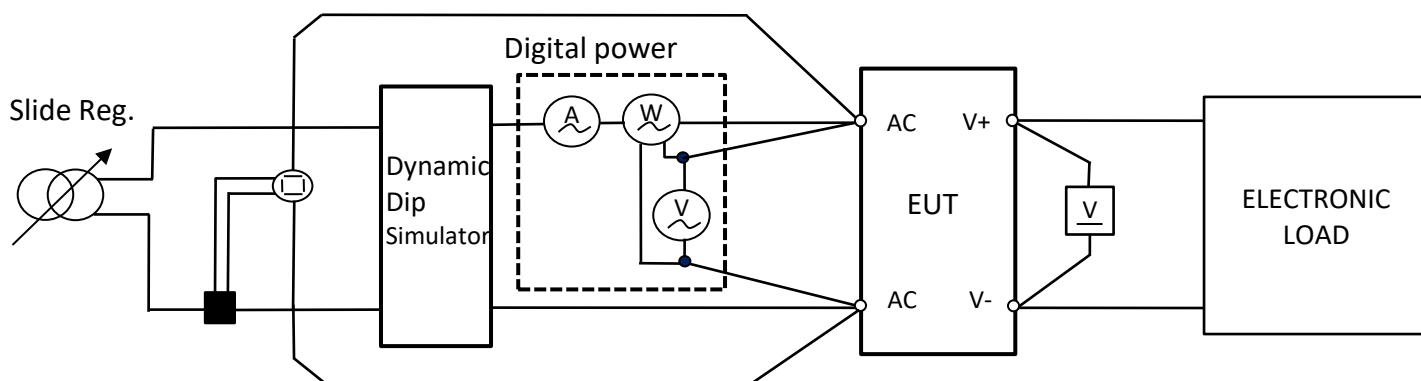
Over Shoot(過沖特性)

Under Shoot(下沖特性)



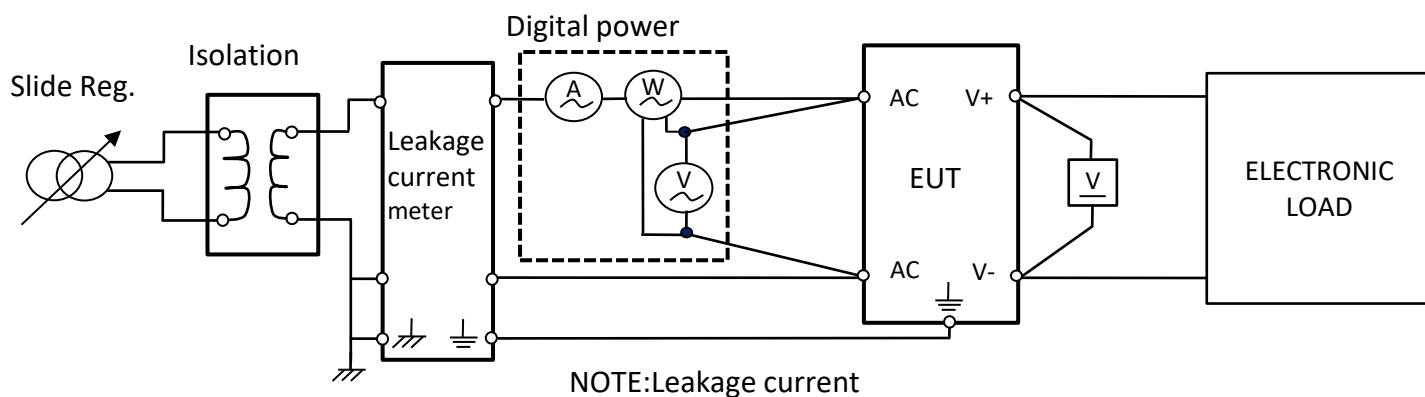
Circuit 2 特性回路2

Inrush Current (浪涌電流)



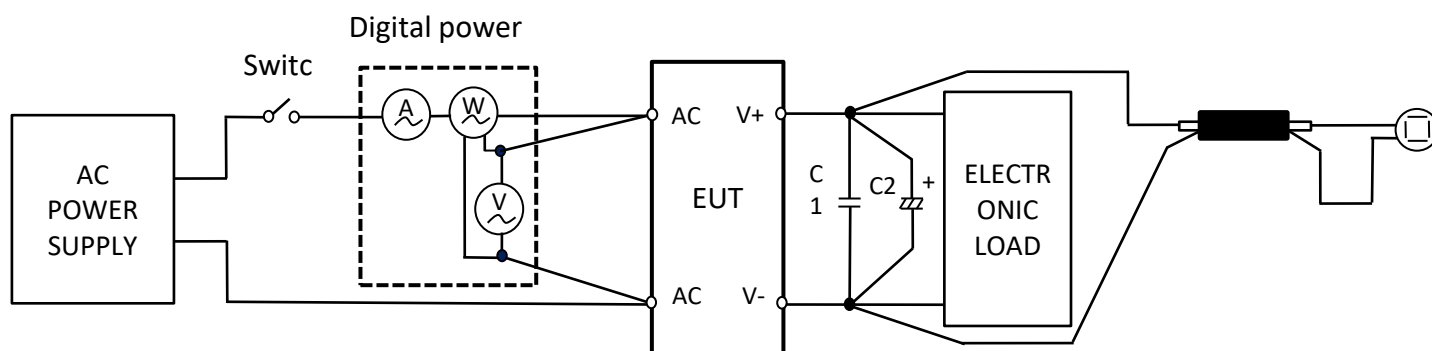
Circuit 3 特性回路3

Leak Current (漏電流特性)



Circuit 4 特性回路4

Ripple And Noise Character(紋波特性)



C1 : 0.1μF CERAMICS CAPACITOR

C2 : 10μ 100V ALUMINUM CAPACITOR

THE BANDWIDTH OF OSCILLOSCOPE IS SET WITH 20MHz

1.ELECTRICAL FUNCTION Character(電氣特性)

1-1.Line&Load Regulation And Temperature Chafaile Character (輸入&負荷及溫度變動特性)

※ Character Condition(特性條件) :

1	I/P Voltage(Vac)(輸入電壓)	85Vac/100Vac/240Vac/265Vac
2	I/P Frequency(Hz)(輸入頻率)	47Hz ~63Hz
3	Output Load(輸出負載)	0%,25%,50%,75%,100% Of Full Load
4	Regulation(調整率)	Load Regulation: $\leq 10\%$; Line Regulation $\leq 2\%$
5	Ambient Temp.(°C)(環境溫度)	25°C
6	Sample Size(取樣數)	1PCS

Output voltage	24.0V
----------------	-------

※ Character Data(特性數據) :

O/P \ I/P	85Vac/63Hz	100Vac/60Hz	240Vac/50Hz	265Vac/47Hz	Line Regulation $\leq 2\%$
0%	24.185V	24.185V	24.189V	24.189V	0.02%
25%	24.178V	24.178V	24.182V	24.183V	0.02%
50%	24.171V	24.172V	24.174V	24.175V	0.02%
75%	24.162V	24.165V	24.166V	24.169V	0.03%
100%	24.153V	24.158V	24.158V	24.161V	0.03%
Load Regulation: $\leq 10\%$	0.13%	0.11%	0.13%	0.12%	

1-2.1 Ripple And Noise Character (紋波與雜訊)

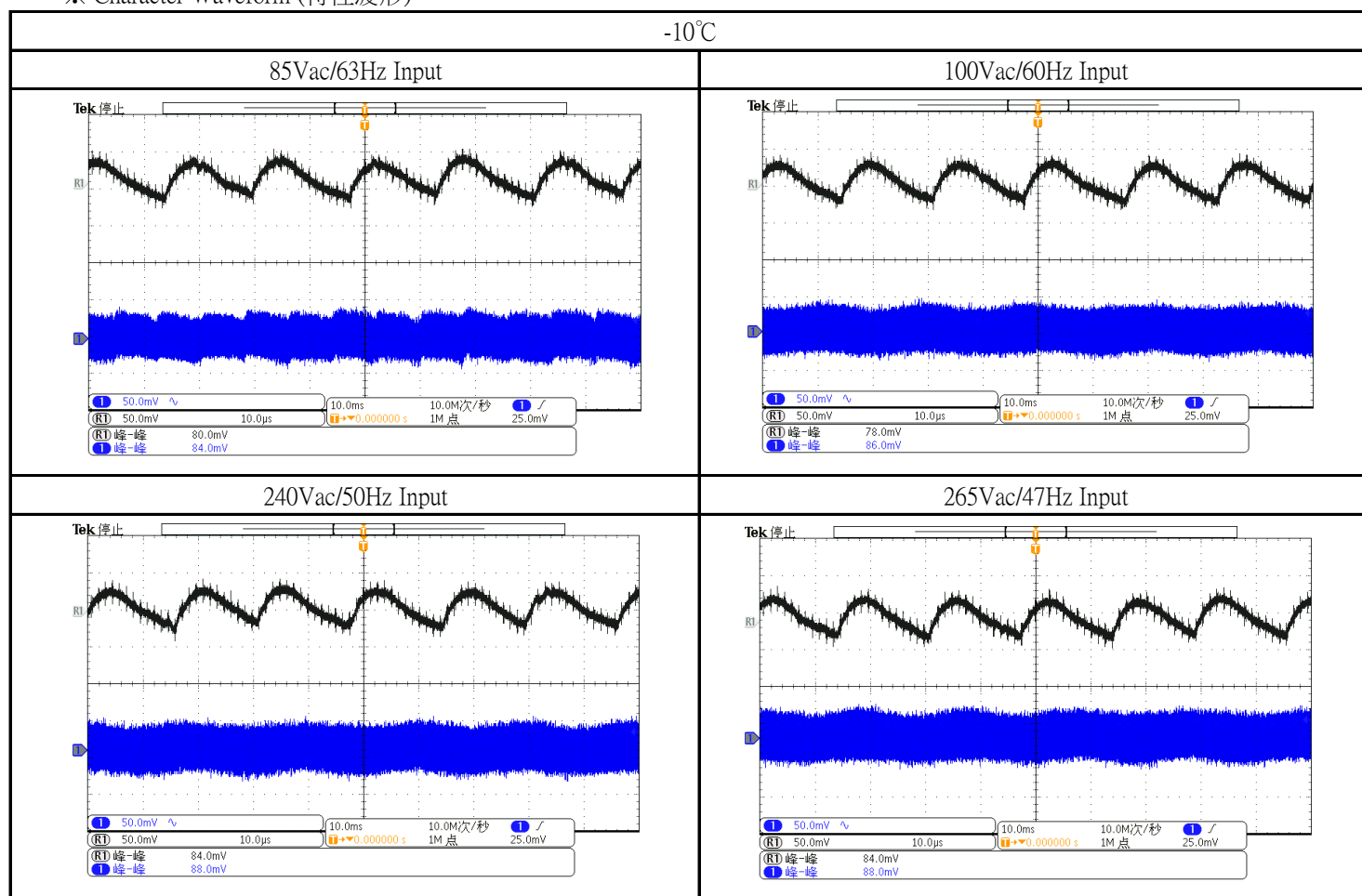
※ Character Condition(特性條件):

1	I/P Voltage(Vac)(輸入電壓)	85Vac/100Vac/240Vac/265Vac
2	I/P Frequency(Hz)(輸入頻率)	47Hz ~63Hz
3	Output Load(輸出負載)	Full Load
4	Ambient Temp.(°C)(環境溫度)	-10°C
5	Sample Size(取樣數)	1PCS

※ Character Data(特性數據):

I/P	85Vac/63Hz		100Vac/60Hz		240Vac/50Hz		265Vac/47Hz	
ITEM	Ripple	Noise	Ripple	Noise	Ripple	Noise	Ripple	Noise
-10°C	80.0mV	84.0mV	78.0mV	86.0mV	84.0mV	88.0mV	84.0mV	88.0mV

※ Character Waveform (特性波形):



1-2.3 Ripple And Noise Character (紋波與雜訊)

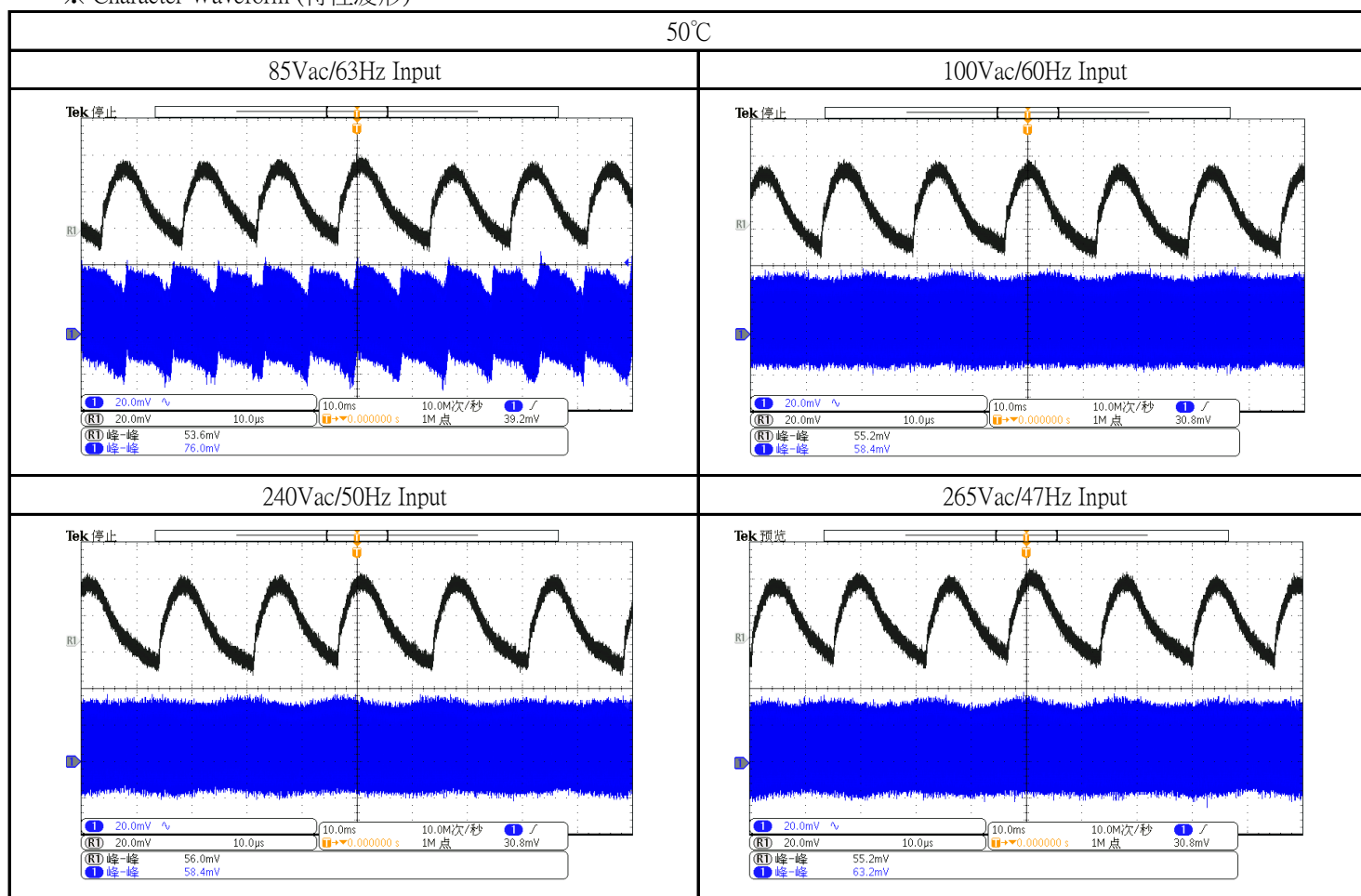
※ Character Condition(特性條件):

1	I/P Voltage(Vac)(輸入電壓)	85Vac/100Vac/240Vac/265Vac
2	I/P Frequency(Hz)(輸入頻率)	47Hz ~63Hz
3	Output Load(輸出負載)	Full Load
4	Ambient Temp.(°C)(環境溫度)	50°C
5	Sample Size(取樣數)	1PCS

※ Character Data(特性數據):

I/P	85Vac/63Hz		100Vac/60Hz		240Vac/50Hz		265Vac/47Hz	
ITEM	Ripple	Noise	Ripple	Noise	Ripple	Noise	Ripple	Noise
50°C	53.6mV	76.0mV	55.2mV	58.4mV	56.0mV	58.4mV	55.2mV	63.2mV

※ Character Waveform (特性波形):



1-3.Over-Voltage Protection(過電壓保護特性)

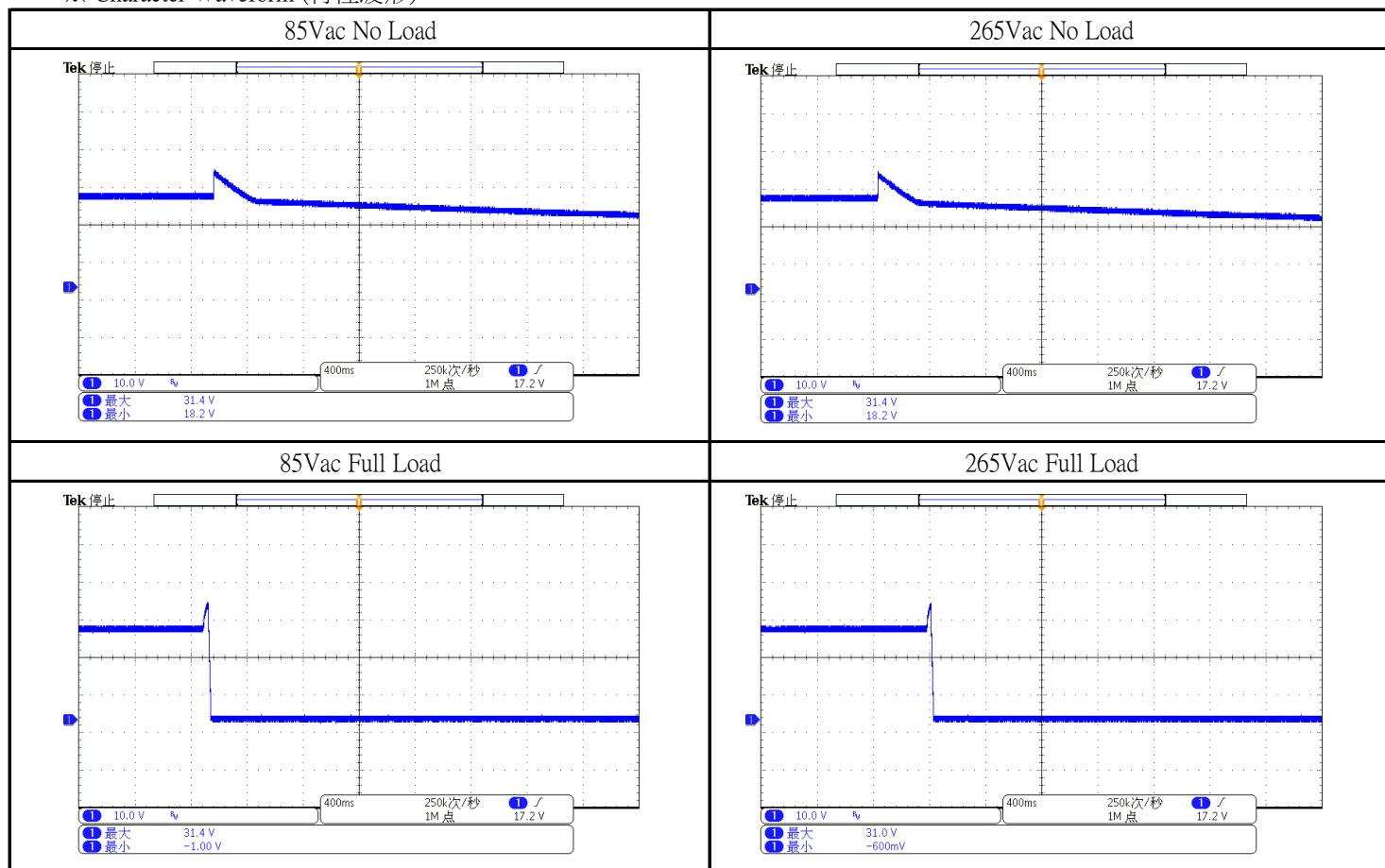
※ Character Condition(特性條件):

1	I/P Voltage(Vac)(輸入電壓)	85Vac/265Vac
2	I/P Frequency(Hz)(輸入頻率)	47Hz /63Hz
3	Output Load(輸出負載)	No/Full Load
4	Ambient Temp.(°C)(環境溫度)	25°C
5	Sample Size(取樣數)	1PCS

※ Character Data(特性數據):

O/P	No Load		Full Load	
I/P	85Vac/63Hz	265Vac/47Hz	85Vac/63Hz	265Vac/47Hz
Character Result	31.4V	31.4V	31.4V	31.0V

※ Character Waveform (特性波形):



1-4.Over-Current Protection(過電流保護特性)

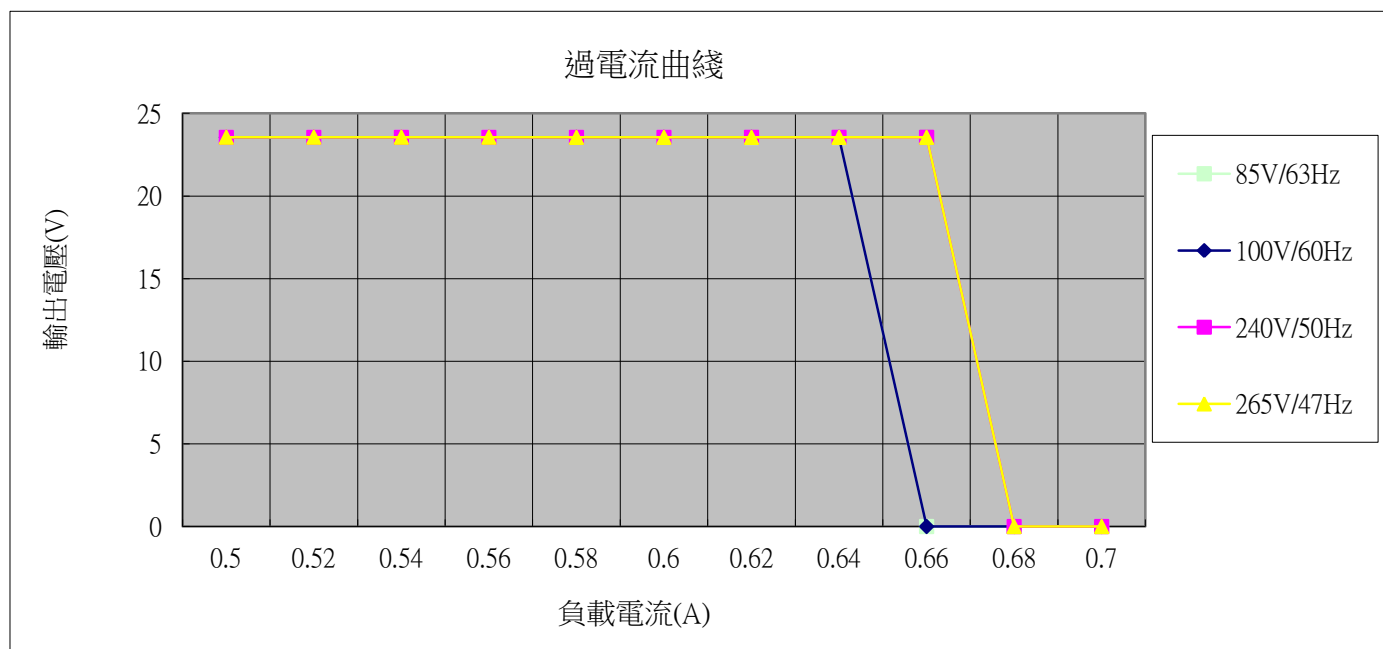
※ Character Condition(特性條件):

1	I/P Voltage(Vac)(輸入電壓)	85Vac/100Vac/240Vac/265Vac
2	I/P Frequency(Hz)(輸入頻率)	47Hz ~63Hz
3	Output Load(輸出負載)	Full Load
4	Ambient Temp.(°C)(環境溫度)	25°C
5	Sample Size(取樣數)	1PCS

※ Character Data(特性數據):

I/P	85V/63Hz	100V/60Hz	240V/50Hz	265V/47Hz
O.C.P點	0.66A	0.66A	0.68A	0.68A

I/P	85V/63Hz										
Voltage(V)	23.55	23.55	23.55	23.55	23.55	23.55	23.54	23.54	0	0	0
Current(A)	0.5	0.52	0.54	0.56	0.58	0.6	0.62	0.64	0.66	0.68	0.7
I/P	100V/60Hz										
Voltage(V)	23.55	23.55	23.55	23.55	23.55	23.55	23.55	23.55	0	0	0
Current(A)	0.5	0.52	0.54	0.56	0.58	0.6	0.62	0.64	0.66	0.68	0.7
I/P	240V/50Hz										
Voltage(V)	23.55	23.55	23.55	23.55	23.55	23.55	23.55	23.55	23.55	0	0
Current(A)	0.5	0.52	0.54	0.56	0.58	0.6	0.62	0.64	0.66	0.68	0.7
I/P	265V/47Hz										
Voltage(V)	23.56	23.56	23.56	23.56	23.55	23.55	23.55	23.55	23.55	0	0
Current(A)	0.5	0.52	0.54	0.56	0.58	0.6	0.62	0.64	0.66	0.68	0.7



1-5. Dynamic ripple Character(動態負載特性)

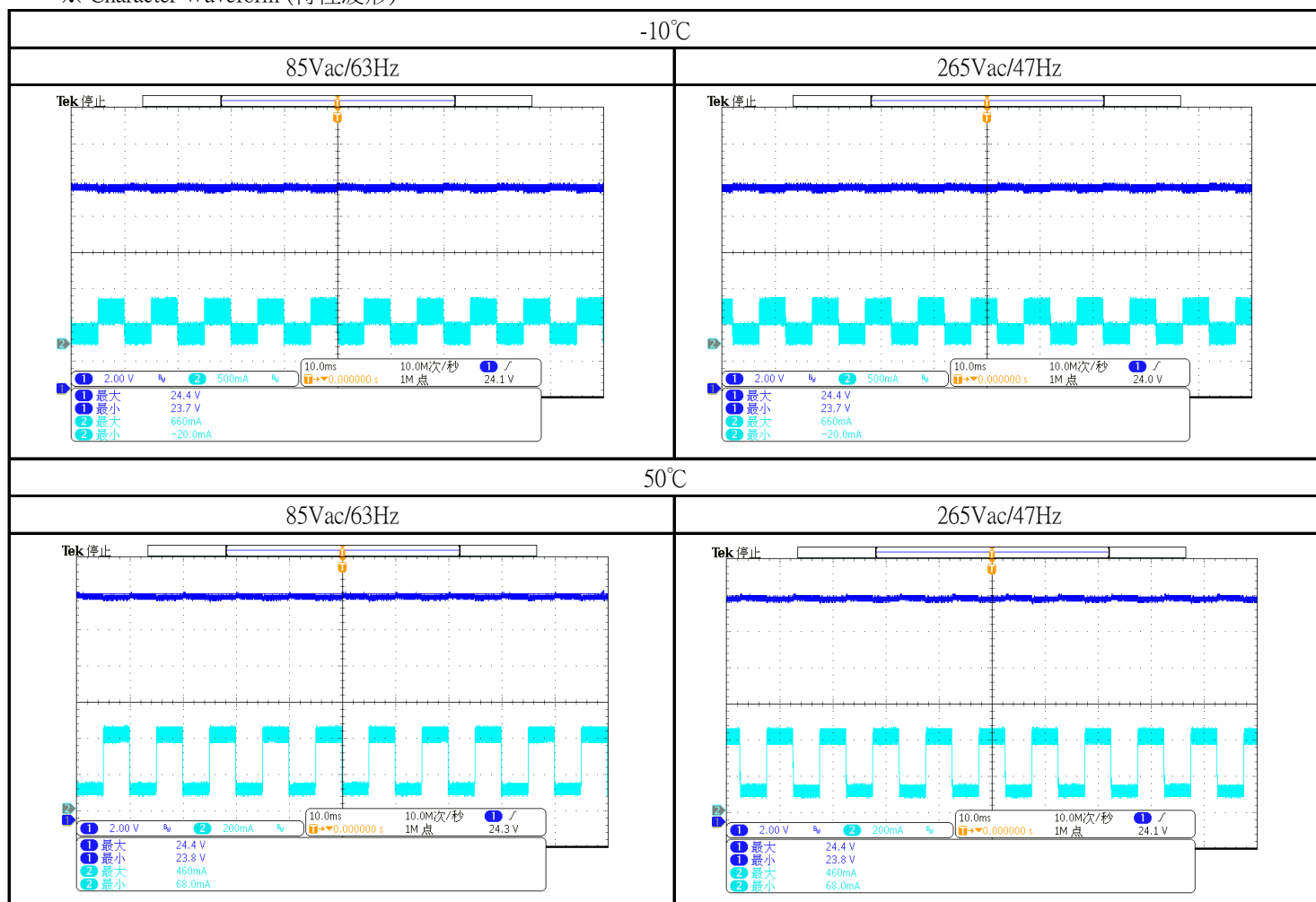
※ Character Condition(特性條件):

1	I/P Voltage(Vac)(輸入電壓)	85Vac/265Vac
2	I/P Frequency(Hz)(輸入頻率)	47Hz /63Hz
3	Output Load(輸出負載)	20%-80% Full Load, TH=5ms, TL=5ms, Slew rate=0.1A/us
4	Ambient Temp.(°C)(環境溫度)	-10°C /50°C
5	Sample Size(取樣數)	1PCS

※ Character Data(特性數據):

I/P	85Vac/63Hz		265Vac/47Hz	
O/P	Max	Min	Max	Min
-10°C	24.4V	23.7V	24.4V	23.7V
50°C	24.4V	23.8V	24.4V	23.8V

※ Character Waveform (特性波形):



1-6.Efficiency Character(效率特性)

※ Character Condition(特性條件) :

1	I/P Voltage(Vac)(輸入電壓)	115Vac/230Vac
2	I/P Frequency(Hz)(輸入頻率)	50Hz / 60Hz
3	Output Load(輸出負載)	0%,10%,25%,50%,75%,100% of Full Load
4	Ambient Temp.(°C)(環境溫度)	25°C
5	Sample Size(取樣數)	1PCS
6	Output Load(輸出負載)	2.0A

※ Character Data(特性數據) :

使用線材	N/A
------	-----

Efficiency								Stand by consumption	
Load		10% 25% 50% 75% 100%						0%	
I/P		115Vac/60Hz			230Vac/50Hz			Input 115V/60Hz	230V/50HZ
O/P Load		Pin (W)	Pout (W)	Efficiency (%)	Pin (W)	Pout (W)	Efficiency (%)	0.05W	0.09W
10%	0.05A	1.481	1.200	81.03%	1.603	1.200	74.86%		
25%	0.5A	3.504	3.020	86.19%	3.591	3.020	84.10%		
50%	0.25A	6.979	6.040	86.55%	7.018	6.040	86.06%		
75%	0.38A	10.49	9.060	86.37%	10.472	9.060	86.52%		
100%	0.5A	14.05	12.070	85.91%	13.927	12.070	86.67%		
Average				86.25%			85.84%		

1-7.Input&Load Change Character(輸入& 負荷變動特性)

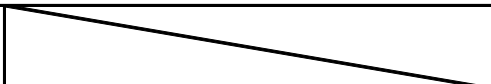
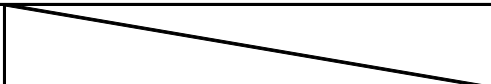
※ Character Condition(特性條件)：

1	I/P Voltage(Vac)(輸入電壓)	85Vac~265Vac
2	I/P Frequency(Hz)(輸入頻率)	47Hz ~63Hz
3	Output Load(輸出負載)	No Load and Full Load
4	Ambient Temp.(°C)(環境溫度)	25°C
5	Sample Size(取樣數)	1PCS
6		

※ Character Equipment(特性設備)：

ITEM	Equipment Item(設備)	Model No. / Manufacturer(製造商和型號)
1	AC Source(變頻器)	ALL POWER/APG-1005N
2	Power Meter(功率表)	YOKOGAWA/WT310
3	DC Load(DC負載)	ITECH/IT8512+

※ Character Data(特性數據)：

Input change with no load			
No Load		Input Condition	
		85V/63Hz	265Vac/47Hz
	Input Current (A)	1.9	1.88
	Input Power (W)	0.045	0.11
Input change with full load			
Full Load		Input Condition	
		85V/63Hz	265Vac/47Hz
	Input Current (A)	0.269	0.12
	Input Power (W)	14.12	13.7

1-8.Inrush Current (浪涌電流)

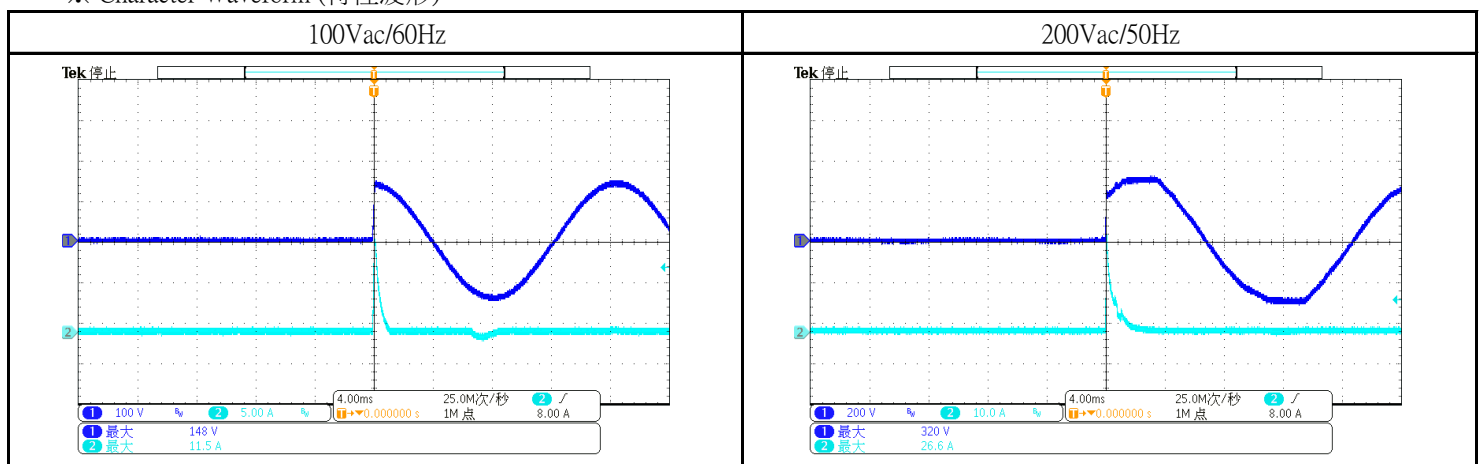
※ Character Condition(特性條件) :

1	I/P Voltage(Vac)(輸入電壓)	100Vac/200Vac
2	I/P Frequency(Hz)(輸入頻率)	50Hz /60Hz
3	Output Load(輸出負載)	Full Load
4	Ambient Temp.(°C)(環境溫度)	25°C
5	Sample Size(取樣數)	1PCS

※ Character Data(特性數據) :

Inrush Current		
O/P I(A)	Full Load	Full Load
	100Vac/60Hz	200Vac/50Hz
Character Result	11.5A	26.6A

※ Character Waveform (特性波形) :



1-9.Turn On Delay(開機爬升延遲時間)

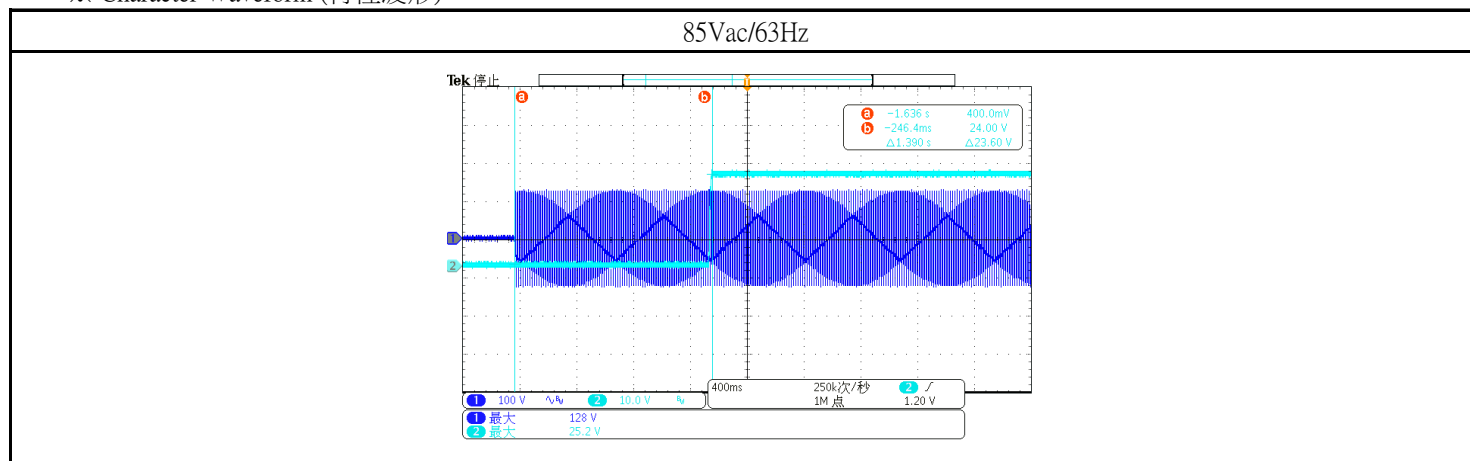
※ Character Condition(特性條件)：

1	I/P Voltage(Vac)(輸入電壓)	85Vac
2	I/P Frequency(Hz)(輸入頻率)	63Hz
3	Output Load(輸出負載)	Full Load
4	Ambient Temp.(°C)(環境溫度)	25°C
5	Sample Size(取樣數)	1PCS

※ Character Data(特性數據)：

Turn on delay time	
I/P	85Vac/63Hz
Character Result	1.39S

※ Character Waveform (特性波形)：



※ Character Condition(特性條件):

※ Character Data(特性數據):

※ Character Waveform (特性波形) :

2-2. Low Vac Shut Off (輸入欠壓關斷特性)

※ Character Condition(特性條件):

1	I/P Voltage(Vac)(輸入電壓)	0~85Vac
2	I/P Frequency(Hz)(輸入頻率)	60Hz
3	Output Load(輸出負載)	Full Load
4	Ambient Temp.(°C)(環境溫度)	25°C
5	Sample Size(取樣數)	1PCS

※ Character Data(特性數據):

LOW Vac SHUT OFF	
0~85Vac Input	
O/P	Full Load
Brown in	75.0V
85~0Vac Input	
O/P	Full Load
Brown out	72.0V

2-3. Over Shoot(過沖特性)

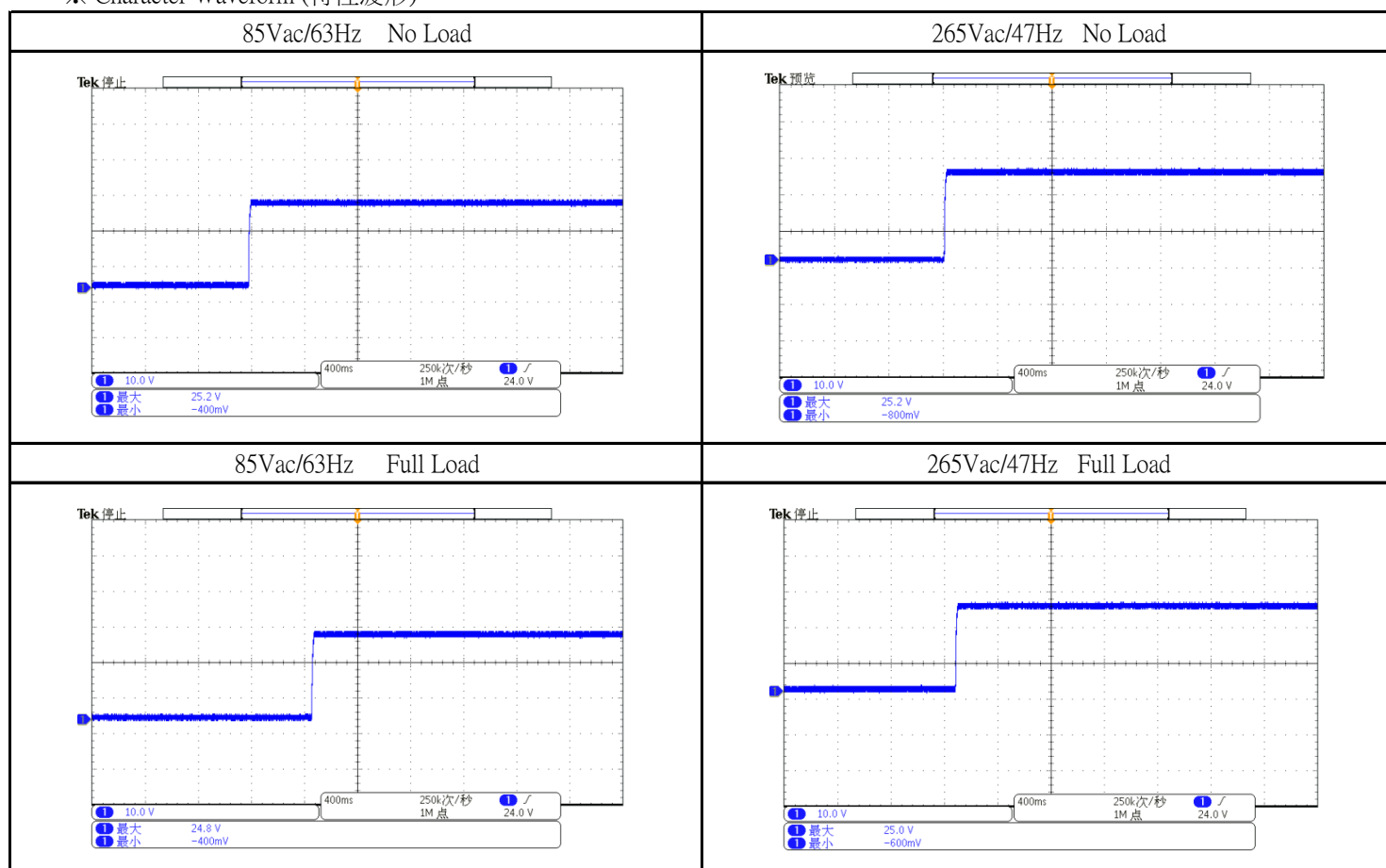
※ Character Condition(特性條件):

1	I/P Voltage(Vac)(輸入電壓)	85Vac/265Vac
2	I/P Frequency(Hz)(輸入頻率)	47Hz /63Hz
3	Output Load(輸出負載)	No Load/Full Load
4	Ambient Temp.(°C)(環境溫度)	25°C
5	Sample Size(取樣數)	1PCS

※ Character Data(特性數據):

Over Shoot				
O/P	No Load		Full Load	
I/P	85Vac/63Hz	265Vac/47Hz	85Vac/63Hz	265Vac/47Hz
Character Result	25.2V	25.2V	24.8V	25.0V

※ Character Waveform (特性波形):



2-4.Under Shoot(下沖特性)

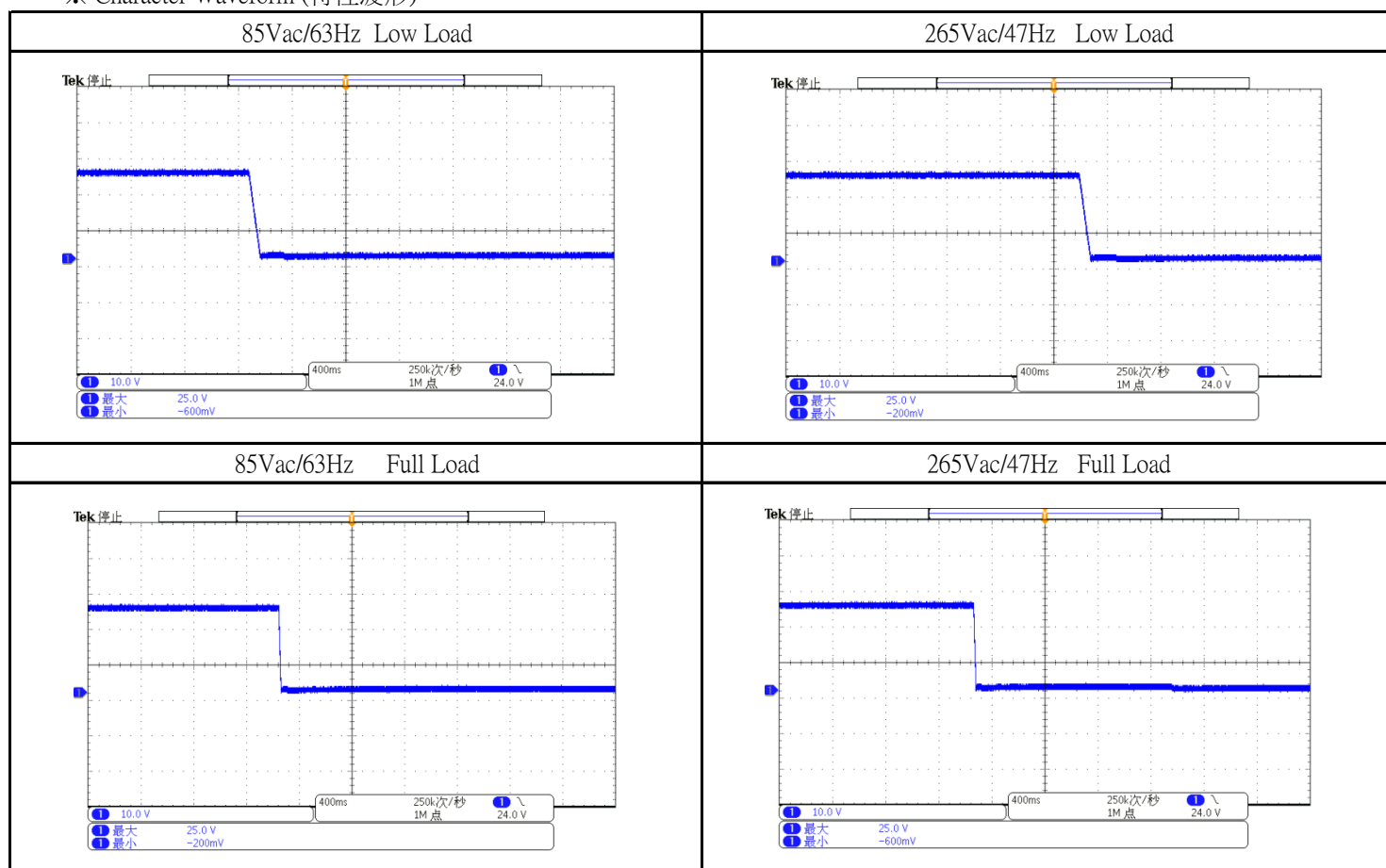
※ Character Condition(特性條件):

1	I/P Voltage(Vac)(輸入電壓)	85Vac/265Vac
2	I/P Frequency(Hz)(輸入頻率)	47Hz /63Hz
3	Output Load(輸出負載)	Low/Full Load
4	Ambient Temp.(°C)(環境溫度)	25°C
5	Sample Size(取樣數)	1PCS

※ Character Data(特性數據):

Under Shoot				
O/P	0.1A		Full Load	
I/P	85Vac/63Hz	265Vac/47Hz	85Vac/63Hz	265Vac/47Hz
Character Result	25.0V	25.0V	25.0V	25.0V

※ Character Waveform (特性波形):



2-5.Leak Current(漏電流特性)

※Character Condition(特性條件) :

1	I/P Voltage(Vac)(輸入電壓)	265Vac
2	I/P Frequency(Hz)(輸入頻率)	50Hz
3	Output Load(輸出負載)	No Load
4	Ambient Temp.(°C)(環境溫度)	25°C
5	Sample Size(取樣數)	1PCS
6		

※Character Equipment(特性設備) :

ITEM	Equipment Item(設備)	Model No. / Manufacturer(製造商和型號)
1	Leak current Characterer(泄漏電流特性儀)	VG2301
2		
3		
4		

LEAK CURRENT CHARACTER

Spec.(mA MAX)	5
O/P	No Load
I/P	265Vac

※Character Data :

SINGLE-PHASE EQUIPMENT

The Character was made in all combinations to the normal and reverse polarity of the supply circuit(Polarity Switch P1)

Terminal A (Switch"s") of Measuring Instrument Connected to:	Switch"e" Position	Touch Current (mA r.m.s.)				
		Polarity P1/Primary Switch Condition				
		Normal/On	Normal/Off	Reverse/On	Reverse/Off	Judgement
Output	Closed	0.076		0.076	-	Pass

- ☐ The touch current [did not] exceed _____ mA r.m.s with terminal A connected to the earth terminal of the unit with Switch "e" opened.
- ☒ The touch current [did not] exceed 5 mA r.m.s with terminal A connected to the earth terminal of the unit with Switch "e" closed.